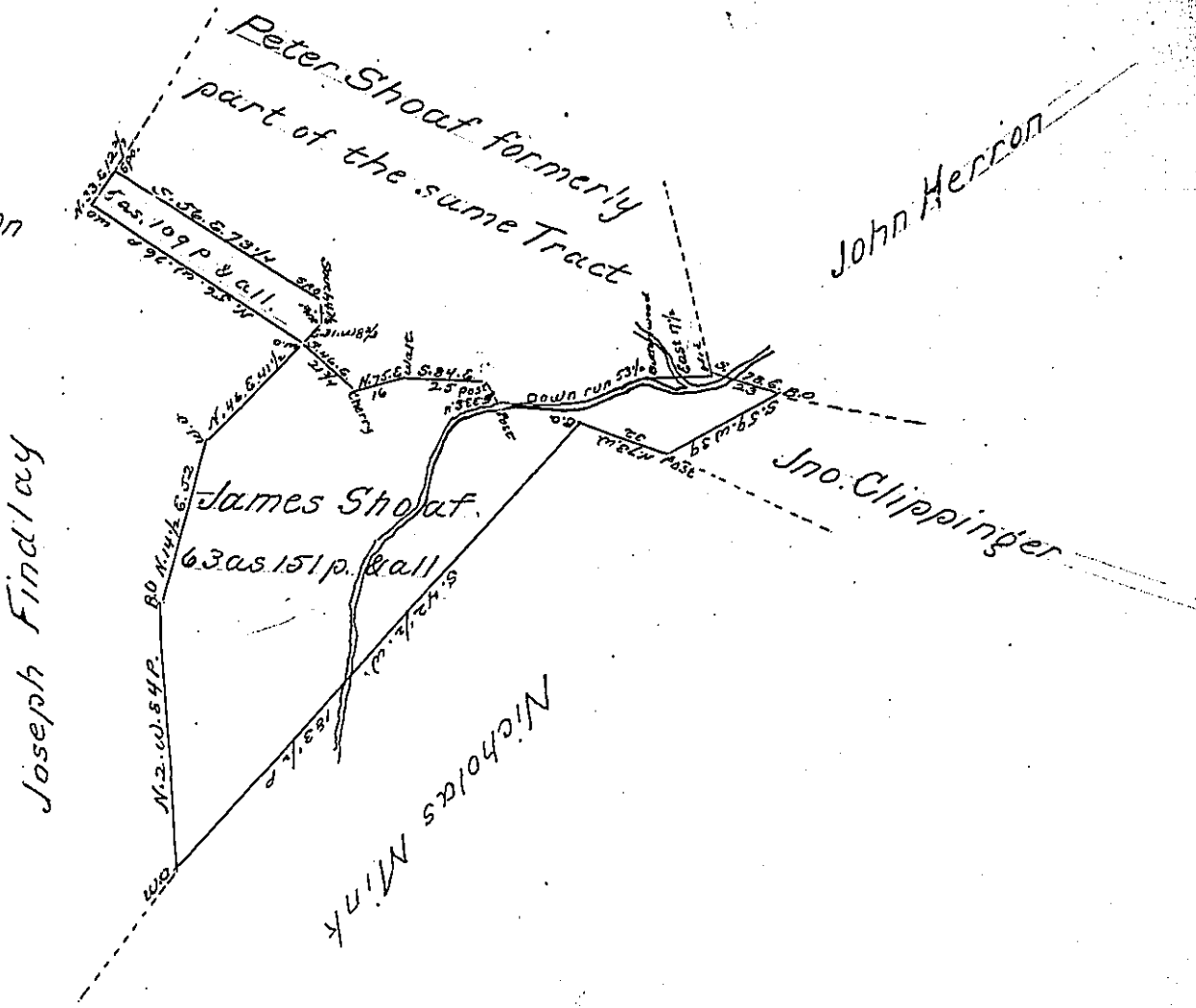


Courses & Distances Down
run Beg at Post thence

- S. 63. E. 7
- S. 84. E. 18
- N. 78. E. 10 1/2
- N. 38. E. 6
- N. 78. E. 12 to Buttonwood
- 53 1/2 P.



The above described two pieces of land situate in Southampton Township in the County of Franklin containing in the whole sixty nine acres 91 perches & the allowance of Six pcent &c. being parts of a Tract Surveyed in pursuance of a Warrant granted to Peter Shoaf bearing Date 6th. February 1787 Surveyed & laid off from the other part of said Tract 20th. June 1799

David Henderson Esq.
To Samuel Cochran Esquire }
Surveyor General. }

IN TESTIMONY that the above is a copy of the original remaining on file in the Department of Internal Affairs of Pennsylvania, made conformably to an Act of Assembly approved the 16th day of February, 1833, I have hereunto set my Hand and caused the Seal of said Department to be affixed at Harrisburg, this second day of July 1901

James W. Pitta
Secretary of Internal Affairs.